

# Appendices to the Southern Ocean data dossier series

Prepared by Lucinda Douglass of the Centre for Conservation Geography ([www.conservationgeography.org](http://www.conservationgeography.org)) for WWF's Antarctic & Southern Ocean Initiative with funding provided by WWF Sweden's Project Ocean.

## Appendix 1: Circumpolar maps of environmental data with the CCAMLR planning domains overlaid

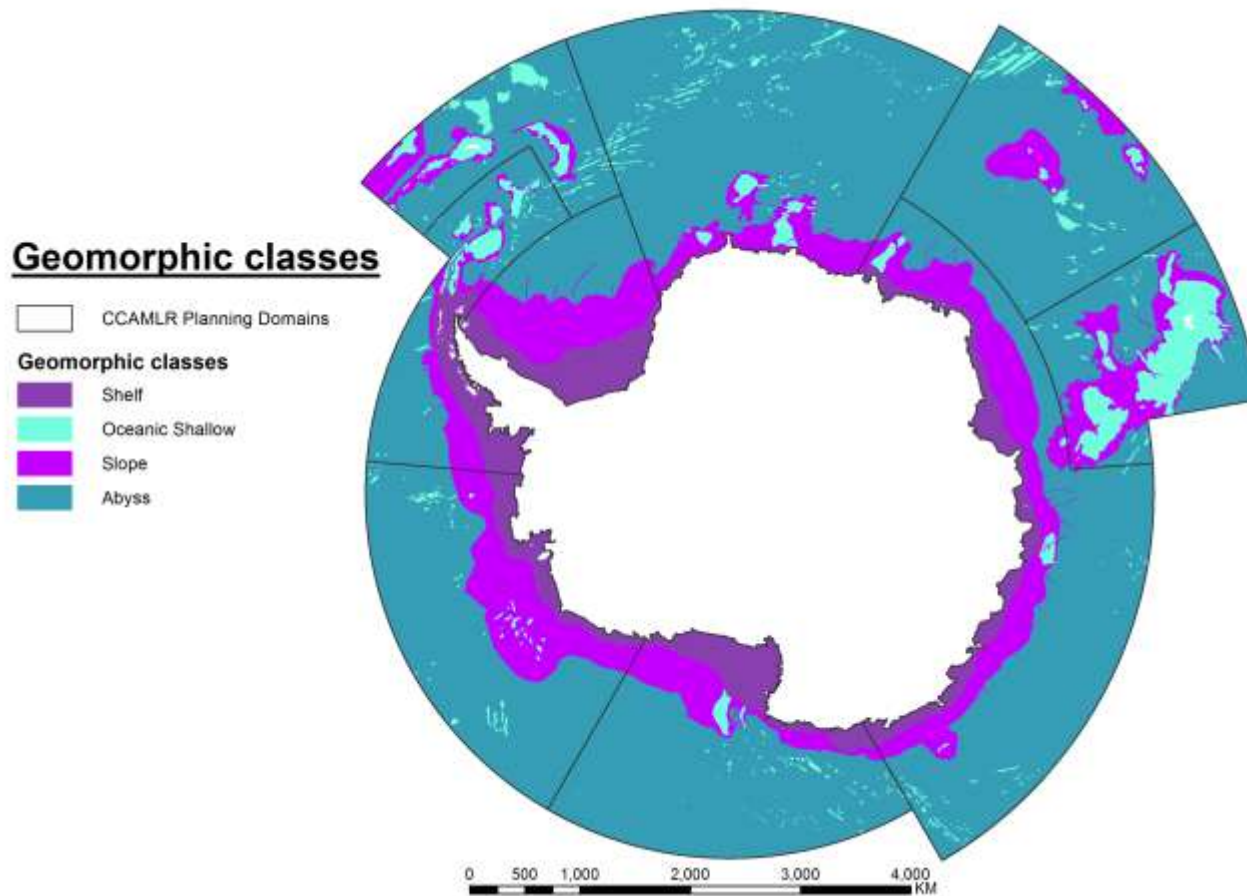


Figure 1: Geomorphic classes with the CCAMLR planning domains overlaid

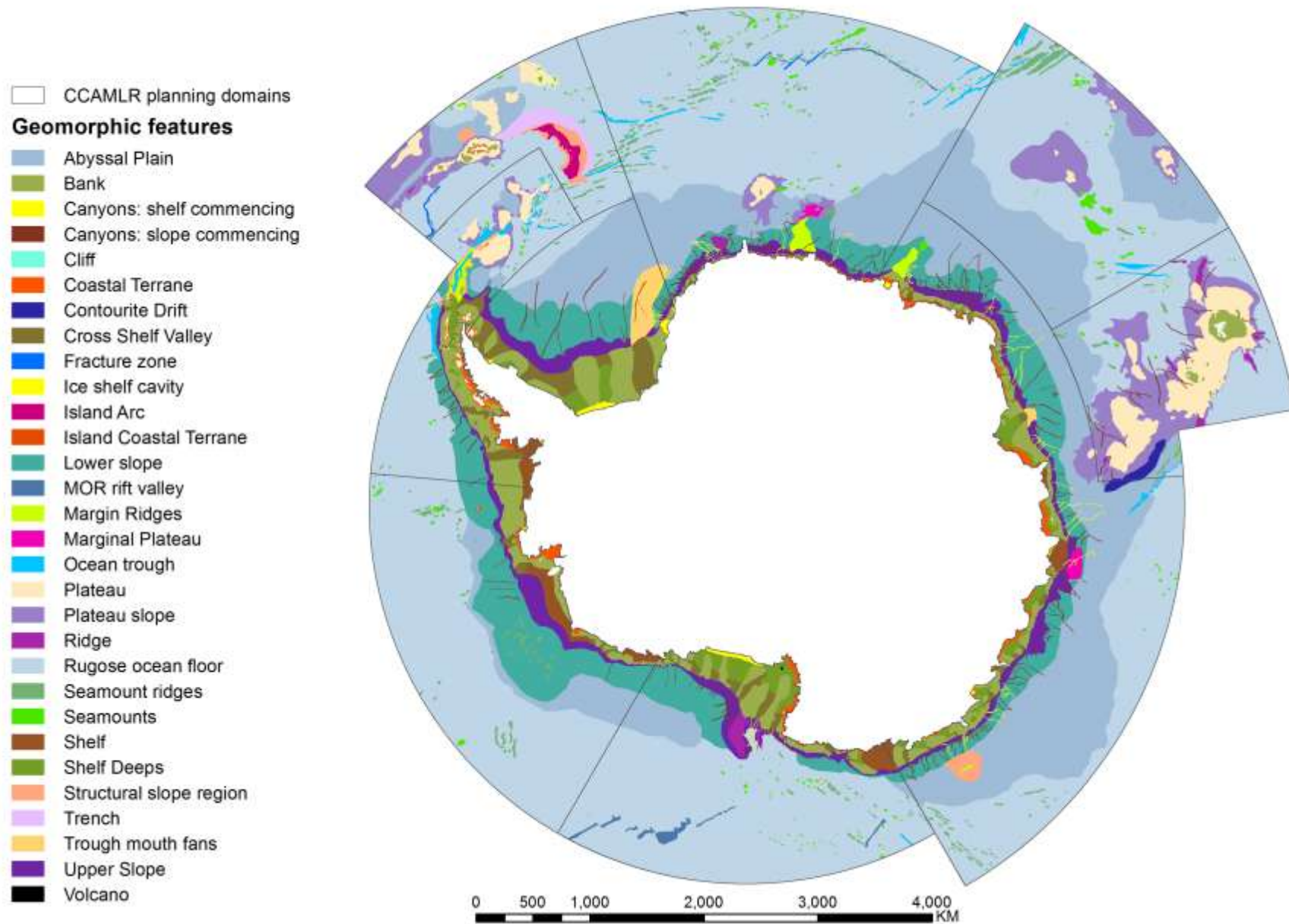


Figure 2: Geomorphic features with the CCAMLR planning domains overlaid

### Pelagic regions and Fronts

CCAMLR Planning Domains

#### Pelagic regions



#### Fronts

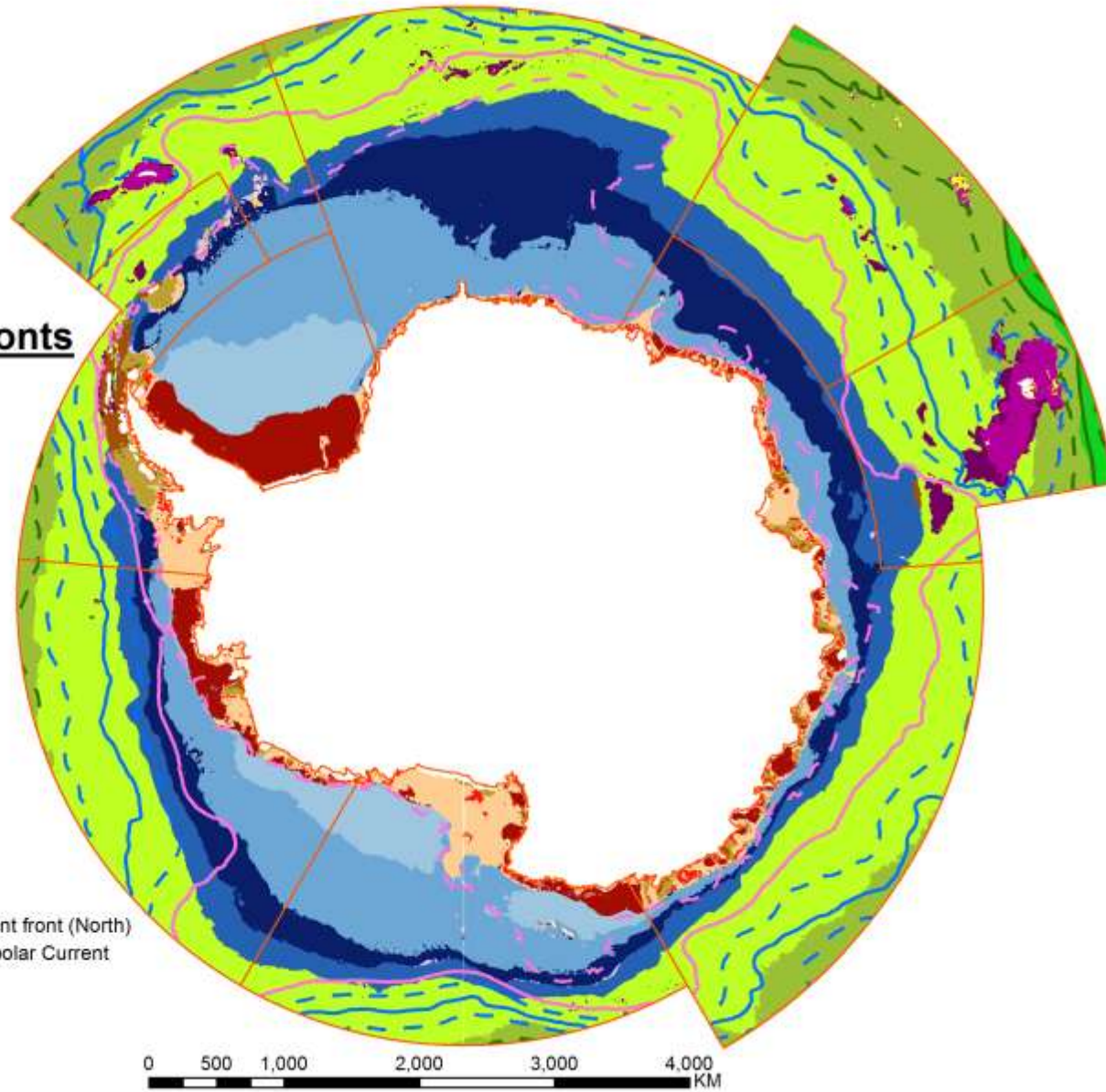


Figure 3: Pelagic regions with the CCAMLR planning domains overlaid

## Depth

 CCAMLR Planning Domains

## Bathymetry

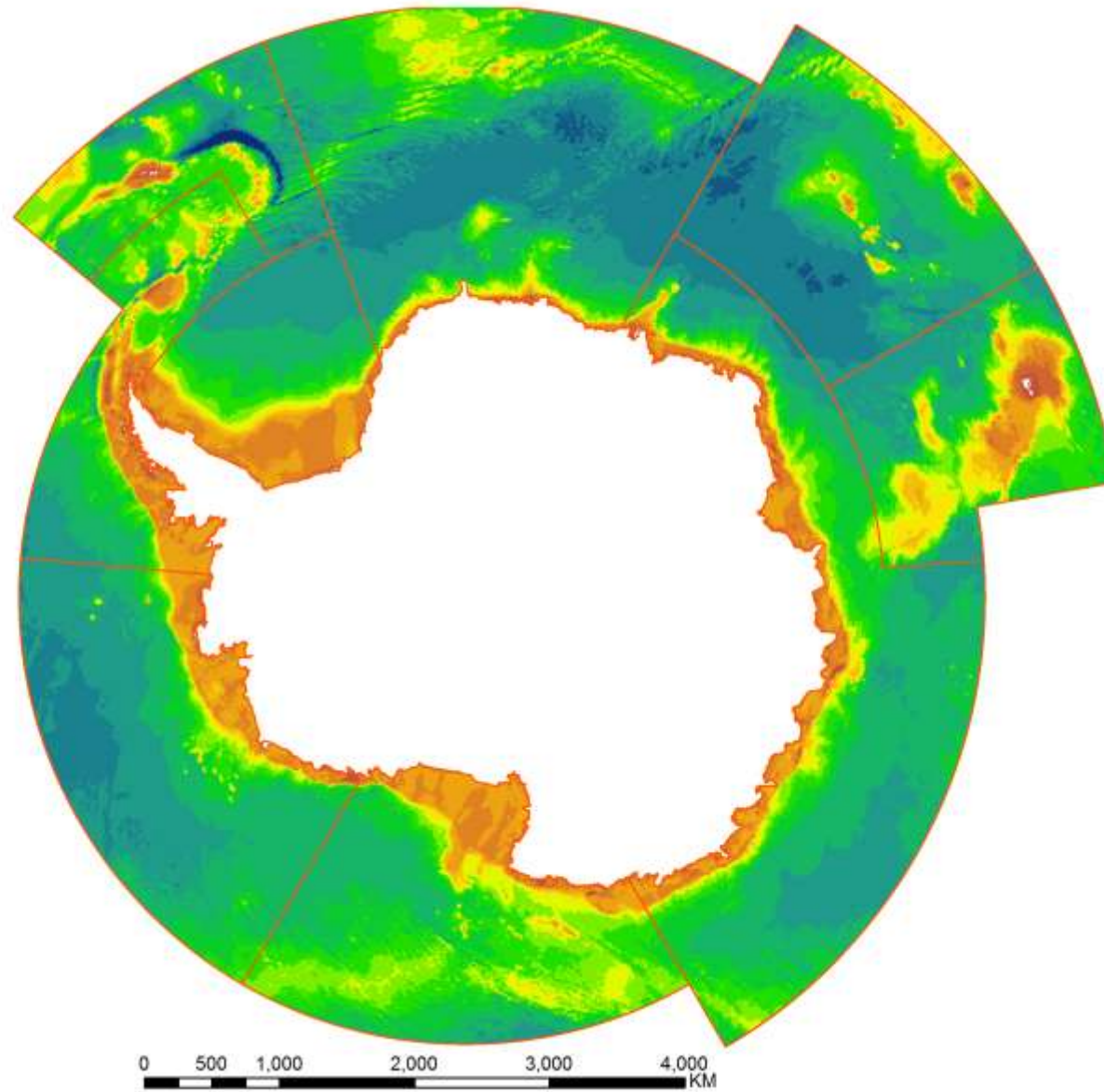
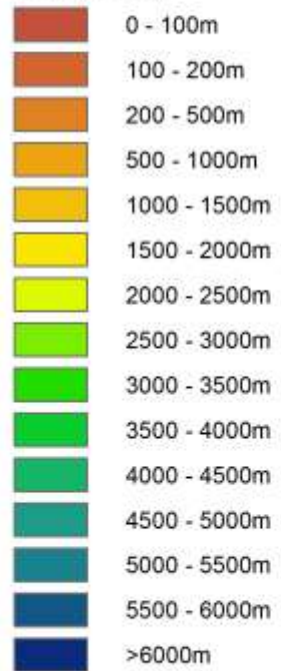


Figure 4: Bathymetry with the CCAMLR planning domains overlaid

## Summer productivity

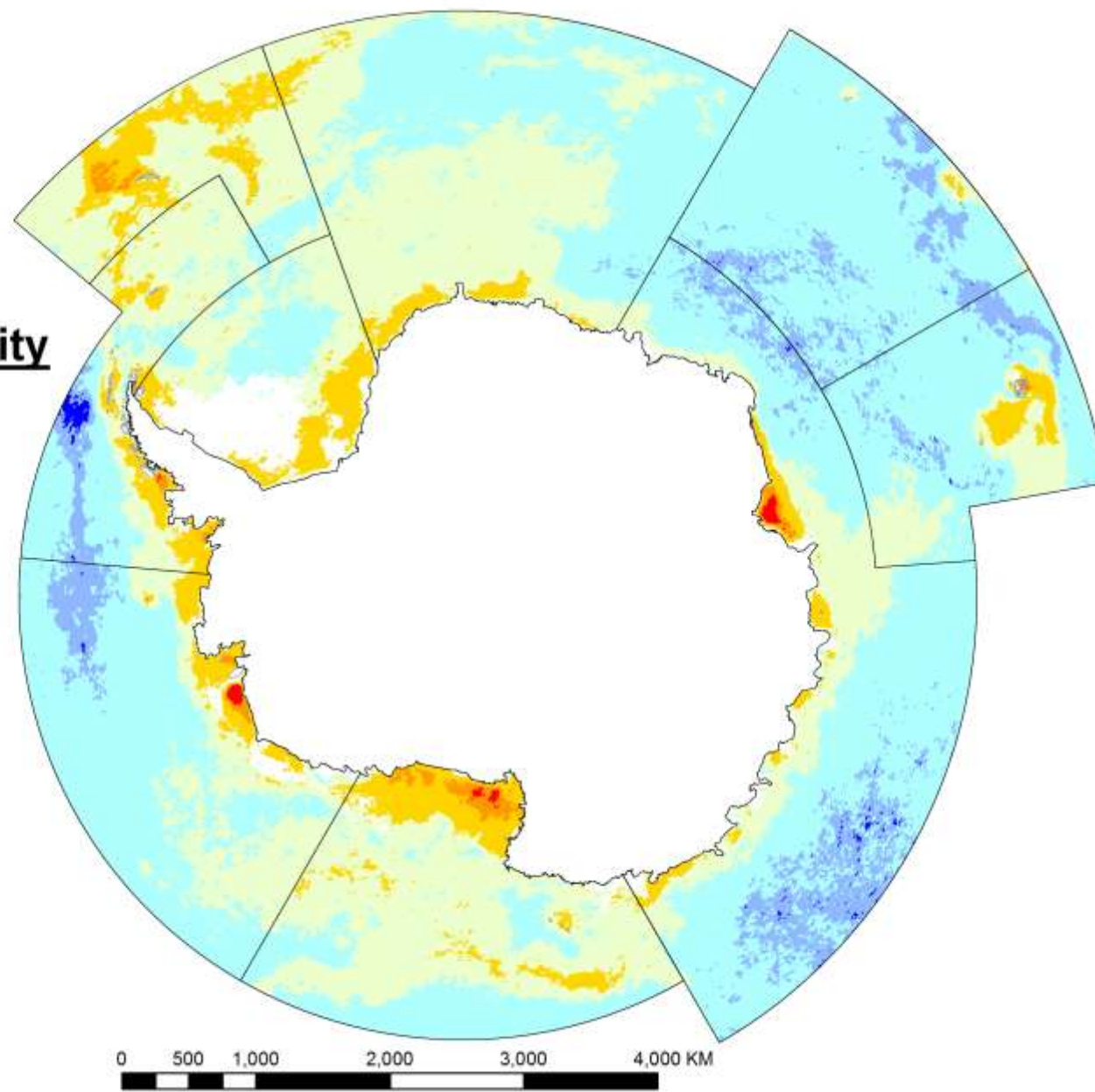
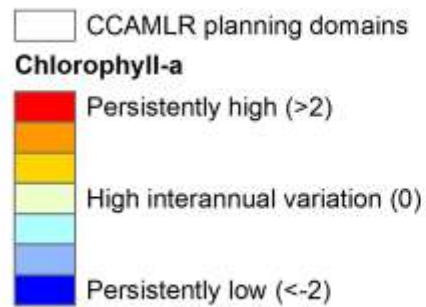


Figure 5: Persistent summer productivity with the CCAMLR planning domains overlaid

## Seabed temperature

 CCAMLR Planning Domains

**Degrees Celsius**

 Warmer : 3  
Colder : -2

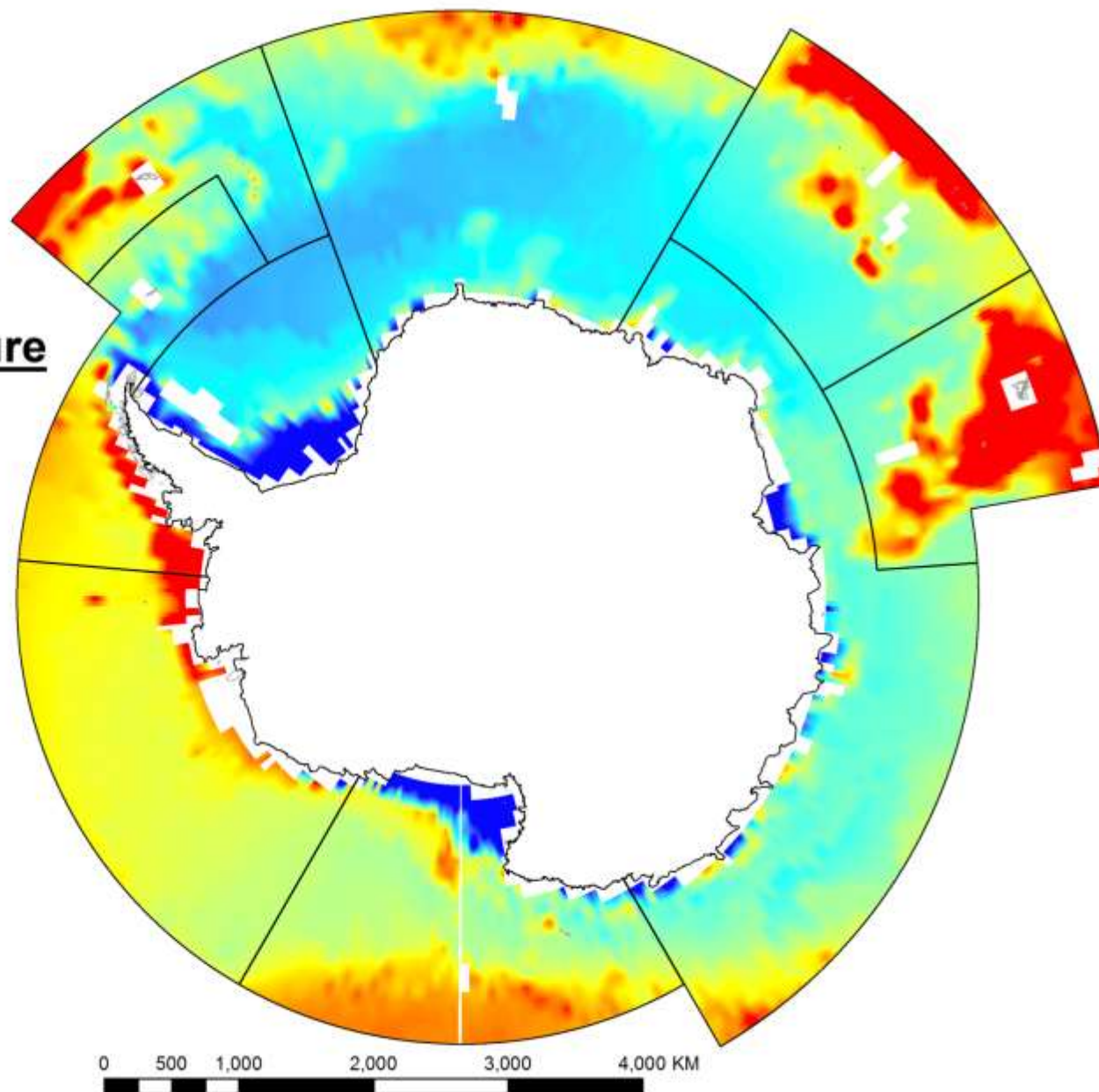


Figure 6: Seabed temperature with the CCAMLR planning domains overlaid

## Sea ice cover

□ CCAMLR Planning Domains

### Proportion of the year with >85% ice

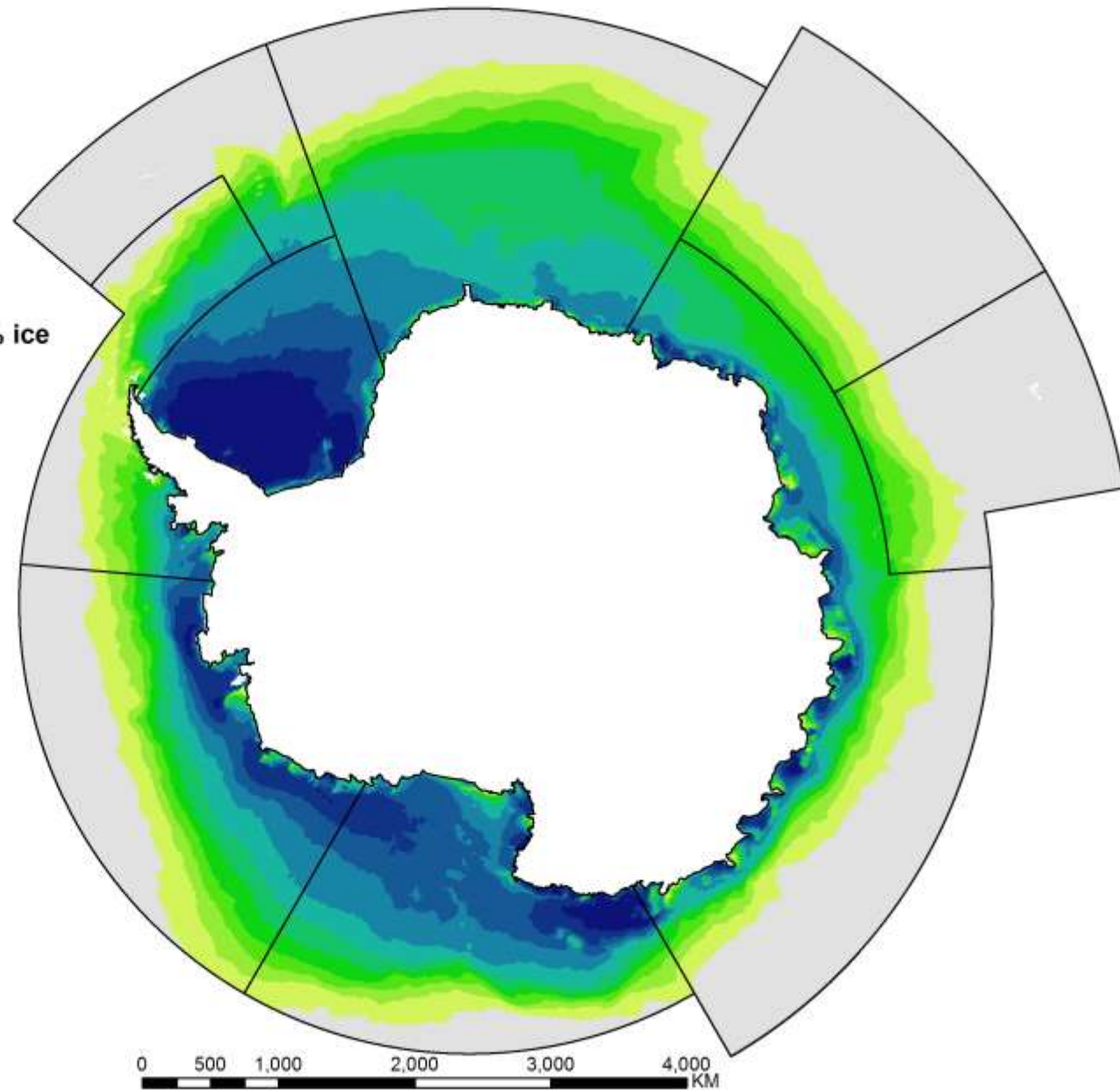
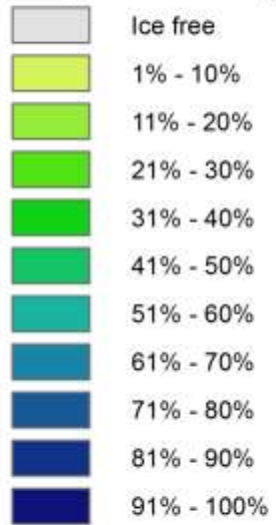


Figure 7: Duration of high Sea ice cover

## Benthic ecoregions

- CCAMLR notified Marine Protected Area
- CCAMLR planning domains
- Antarctic Peninsula
- Weddell Shelf
- South Orkney Islands
- South Sandwich Islands
- South Georgia
- Atlantic Basin
- Dronning Maud
- South Atlantic
- Del Cano
- Ob & Lena
- Kerguelen - Deep Kerguelen Subregion
- Kerguelen - Kerguelen Plateau Subregion
- Kerguelen - Banzare Bank Subregion
- Central Indian - East Kerguelen Subregion
- Central Indian - Prydz Bay Subregion
- Central Indian - West Kerguelen Subregion
- Central Indian - Wilkes Subregion
- East Indian Abyssal
- Oates
- Pacific-Antarctic Ridge
- Ross Sea
- Pacific Basin
- Amundsen

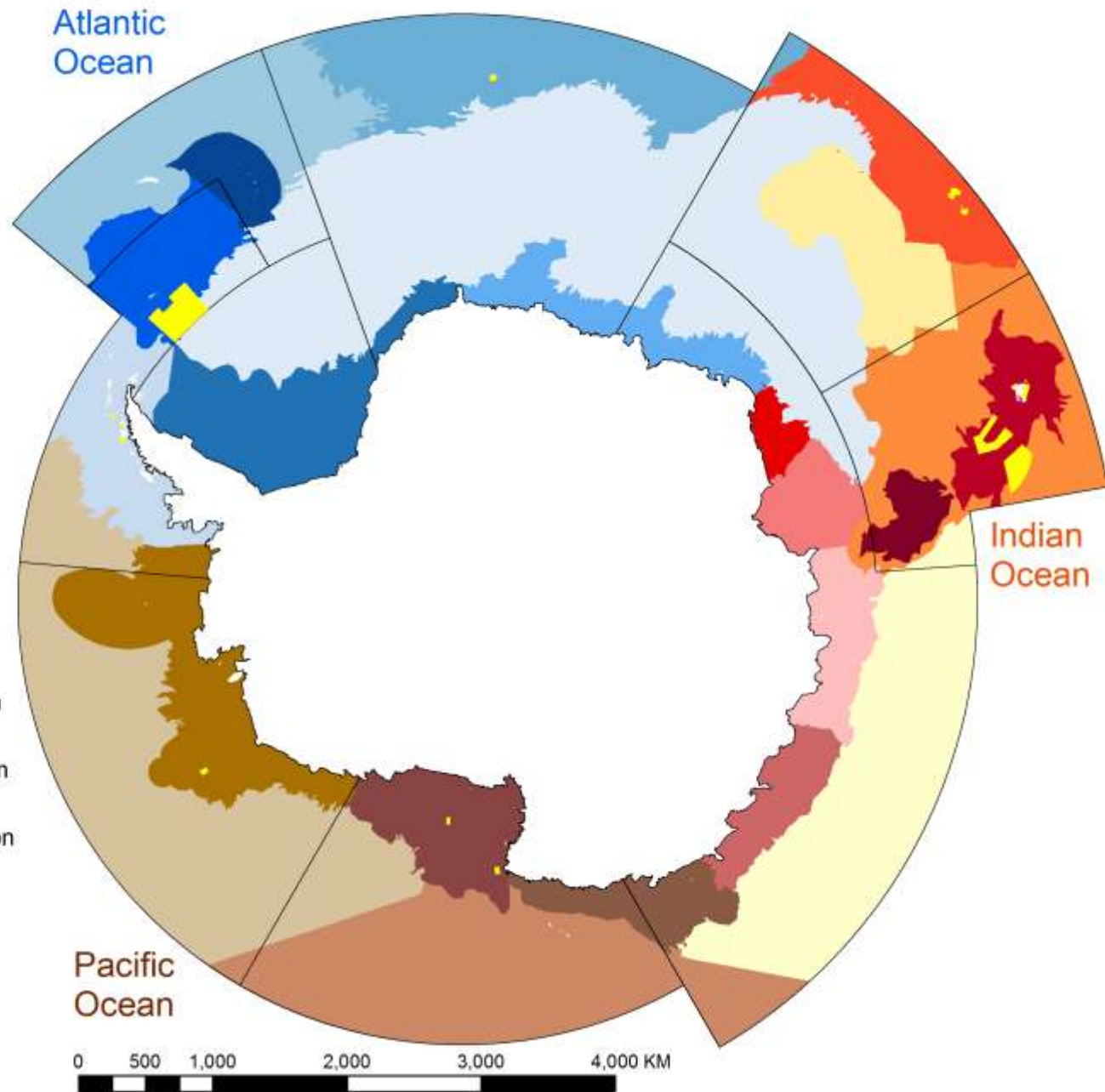


Figure 8: Benthic ecoregions and marine protected areas



Appendix 2: Statistics of the coverage of a) seaice, b) seabed temperature and c) persistent summer productivity

